



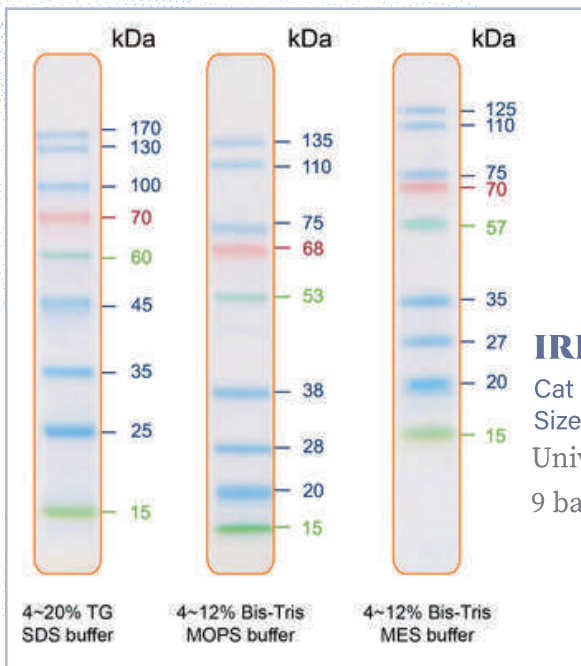
Proteomics

WHERE RESEARCH
MEETS DIAGNOSIS

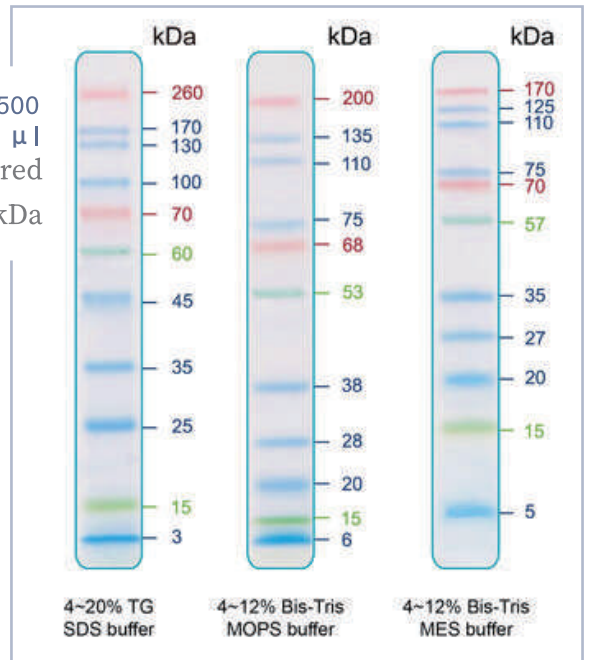
Protein Marker/Ladder

IRIS Series Prestained Protein Ladder

- Newly Launched Version
- New Manufacturing Process
- 4 Colors, with an unique Peacock Green at 60 kDa
- Broader Range: 3kDa – 260 kDa (IRIS11)
- Suits in all kinds of Protein Electrophoresis Conditions

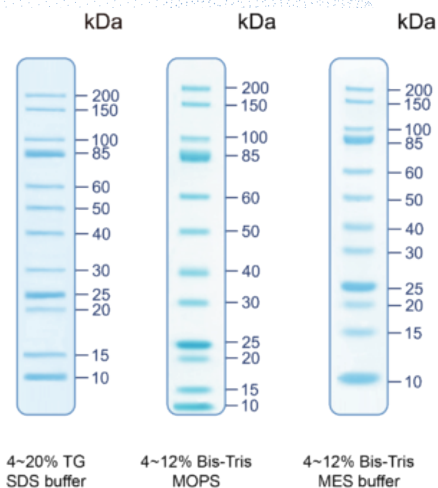


IRIS 11
Cat No: PMI11-0500
Size: 500 μ l
Widely Covered
11 bands, 3-260 kDa



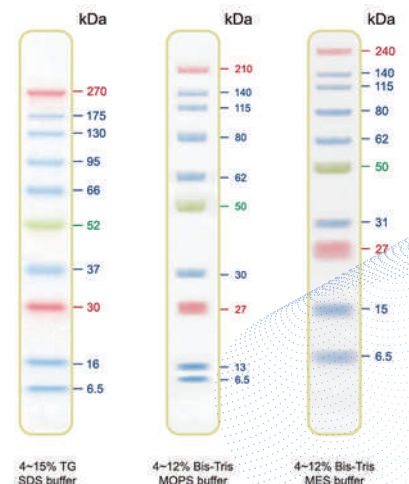
Blu10 Plus

Cat No. PMB01-0500
Size : 500 μ l
Broader & Smaller
10 bands, 6.5-270 kDa



UNveil Unstained

Cat No. PMU12-0500
Size : 500 μ l
Unbiased Accuracy
12 bands, 10-200 kDa



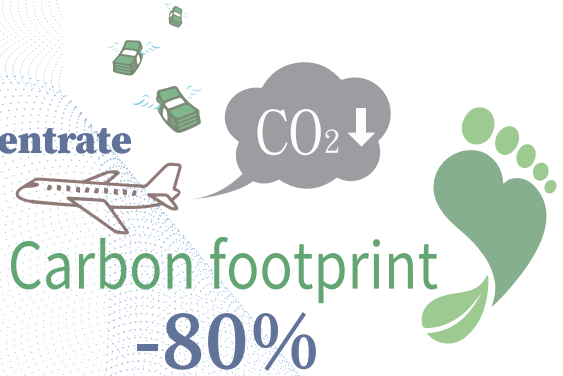
Staining Reagent

COOMASSIE^{nano} Protein Staining Solution

Cat No: PS002-B500ML
Size: 500 ml

Cat No: PS002-L05X
Size: 1 L

5X Concentrate



- **Fast and Fabulous** – Visualization in 5 minutes, Sensitivity down to 10ng
- **Better Contrast** – Sharp bands & clean background
- **Safer & Greener** – No organic solvents, hazardous materials, less water usage
- **All in 1 Step** – No washing, heating, destaining

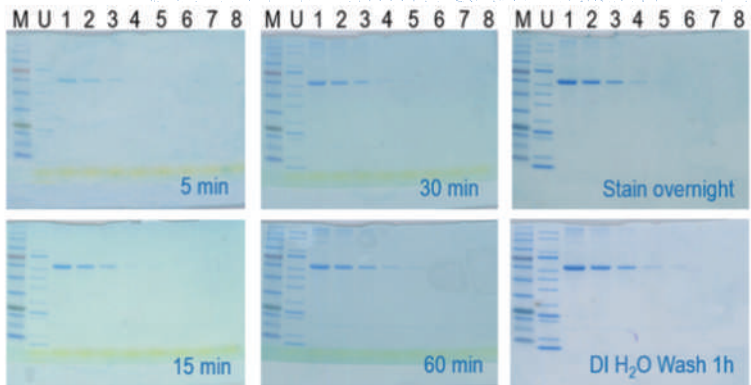
High Sensitivity Orientation

M1 A B C D E F G H I M2

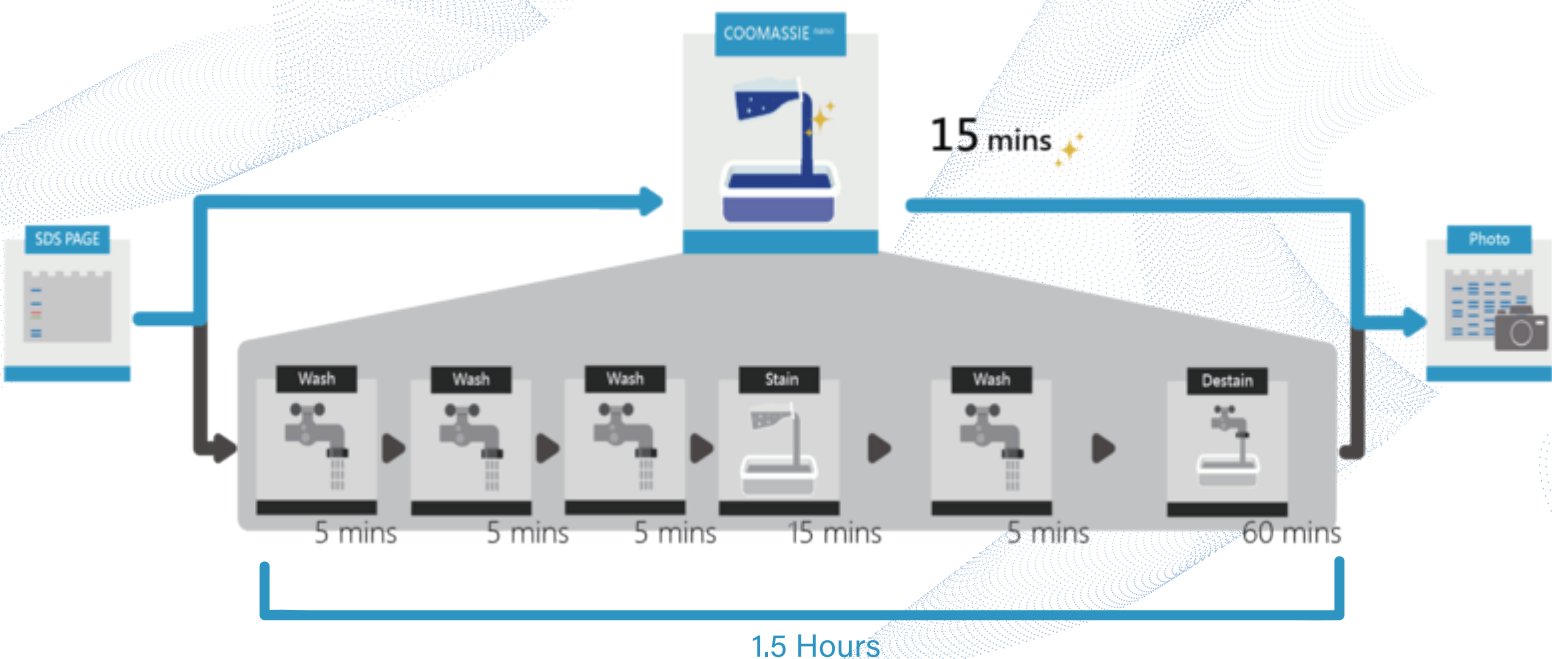


Lane M1: PM019-0500
Lane A: BSA 2000 ng
Lane B: BSA 1000 ng
Lane C: BSA 500 ng
Lane D: BSA 100 ng
Lane E: BSA 50 ng
Lane F: BSA 25 ng
Lane G: BSA 12.5 ng
Lane H: BSA 10 ng
Lane I: BSA 5 ng
Lane M2: PMU12-0500

Time Saving Orientation



M: Prestain ladder
U: Unstain ladder
Lane 1: BSA 2,000 ng
Lane 2: BSA 1,000 ng
Lane 3: BSA 500 ng
Lane 4: BSA 100 ng
Lane 5: BSA 50 ng
Lane 6: BSA 10 ng
Lane 7: BSA 5 ng
Lane 8: BSA 1 ng



Ponceau S Protein Staining Solution

Cat NO. PS003-B500ML/L10X

- Rapid protein stain for nitrocellulose or PVDF membrane
- Reversible & destainable for the incoming Western Blot procedures
- Reuseabl in a certain times
- Provided in 1X or 10X concentrated version to save the freight

1 2 3 4 5 6 7 8 9 10 11 12 13



Lane 1, 13: Prestained Protein Ladder#PM019-0500
Lane 2-7: 2X Dilutions of Unstained Protein Ladder #PMU12-0500
Lane 8-12: 2000, 1000, 500, 50 ng of BSA

Blocking Solution

OneStep Blocker

Cat NO: BS001-B500ML

Weak Antibody Signal?

OneStep Blocker - A Western Blocking and Signal Enhancing Solution

Features

- 3 steps in one
- Enhances antibody signal
- Enhances time-saving
- Universal antibody diluent & NC membranes
- No blocking step needed
- Effective with any ECL
- Less hands-on steps
- Compatible with PVDF & NC membranes
- Improves protein detection

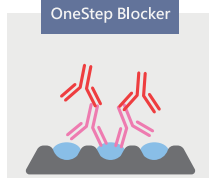


1° AB (ab8227, abcam): Rabbit anti-β Actin;
2° AB (ab205718, abcam): Goat anti Rabbit HRP;

OneStep



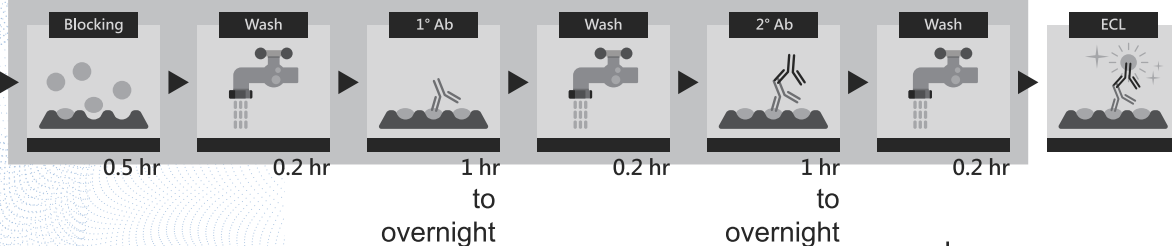
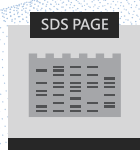
OneStep Blocker



ECL



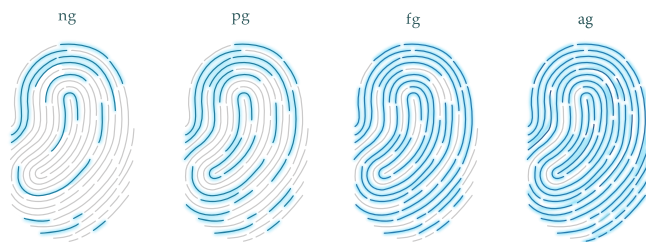
Conventional



2.5 days

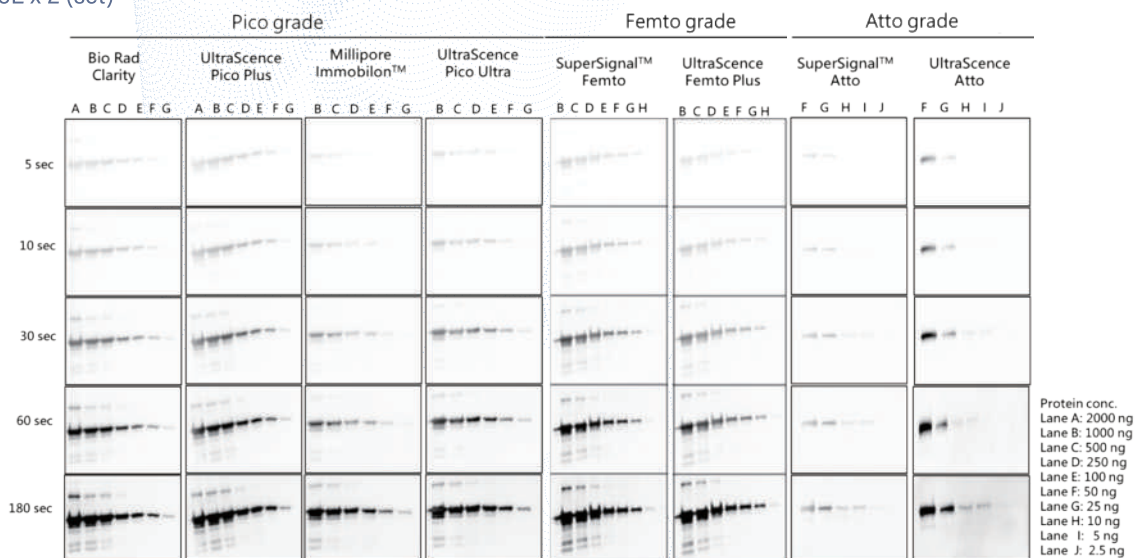


HRP Substrate



UltraScience Western Substrate

Cat No: CCH321-B100ML/P10L, CCH345-B100ML/P10L, CCH375-B100ML/P10L, CCH385-B100ML/P10L
 Size: 100 ml / 5L x 2 (set)

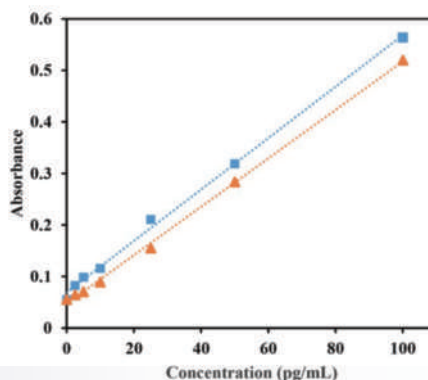


Bio-Helix Western Substrates	Advantages for you	Sensitivity	Significantly Comparable Performance with
UltraScience Pico Plus Western Substrate	Best value for entry-level Western Substrates with detecting the abundant proteins	low picogram to high femtogram	Thermo Scientific™ Pierce™ ECL Substrate Thermo Scientific™ SuperSignal™ West Pico PLUS Cyanagen™ Westar Nova™ 2.0 Advansta™ WesternBright™ ECL Abcam High Sensitivity ECL Substrate Kit
UltraScience Pico Ultra Western Substrate	Better choice for seeking lower abundant proteins, over 30 times sensitivity than UltraScience Pico Plus western substrate	low picogram to mid femtogram	Millipore™ Immobilon™ Western Substrate Fujifilm™ Wako™ ImmunoStar® Zeta Cytiva™ Amersham™ ECL Prime Advansta™ WesternBright™ Quantum™ Abcam Very High Sensitivity ECL Substrate Kit Cyanagen™ Westar™ ETA C Ultra 2.0 Thermo Scientific™ SuperSignal™ West Dura
UltraScience Femto Plus Western Substrate	Born to seek, seeking less abundance proteins in your Western Blot, even low femtograms	mid femtogram to low femtogram	Fujifilm™ Wako™ ImmunoStar® LD GeneTex™ Trident™ Femto Thermo Scientific™ SuperSignal™ West Femto Advansta™ WesternBright™ Sirius™ Abcam Ultra High Sensitivity ECL Substrate Kit Cyanagen™ Westar™ Supernova™ Cytiva™ (GE Healthcare™) ECL Select™
UltraScience Atto Western Substrate	Break the record, providing the most sensitive and brightest protein signal for your Western Blot.	low femtogram to high attogram	Thermo Scientific™ SuperSignal™ West Atto Cyanagen™ Westar™ Hypernova™

UltraScience TMB ELISA Substrate

Cat No: TM001-B100ML
 Size: 100 ml

- Ready-to-use solutions
- No hydrogen peroxide required
- No filtering required
- Noncarcinogenic
- Significantly more sensitive than leading manufacturers on the market



WE CARE!

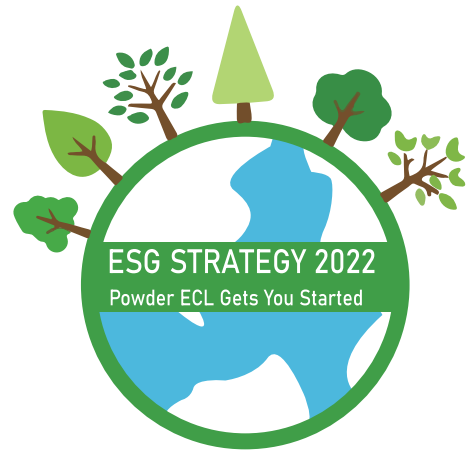
ESG



Powder form of ECL Substrates Weigh **130grams**
to be prepared for **13Kg** of the Reaction Solution



US Patent No: US10,711,185



**99% of CO₂
Emission Reduced**

UltraScience CLIA & CMIA Substrate

Tailor-made

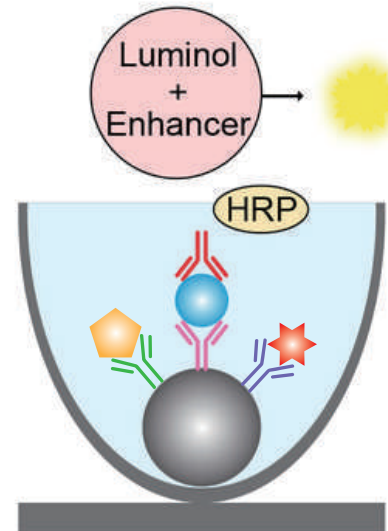
- Limit of detection (LOD) ranges from nano-gram to femto-gram.
- Product format offers the powder or liquid format.



www.bio-helix.com +886-2-24624956

info@bio-helix.com +886-2-24628849

5F., No. 145, Sec. 3, Beixin Rd., Xindian Dist., New Taipei City, Taiwan



Chemiluminescence Substrate