

Iris9 - Prestained Protein Ladder

01APR 2021

Catalog Number	Size	Range
PM009-0500	500 µl	15 to 180 kDa

Storage Conditions

Stable for up to 2 weeks at 25°C.

Stable for up to 3 months at 4°C.

Stable for up to 24 months at -20°C.

Description

The Iris9 Prestained Protein Ladder is a three-color protein standard with 9 pre-stained proteins covering a wide range molecular weight from 15 to 180 kDa. Proteins are covalently coupled with a blue chromophore except for four reference bands (two green bands at 15 kDa & 60 kD and two red bands at 30 kDa & 70 kDa respectively) when separated on SDS-PAGE (Tris-glycine buffer). The Iris9 Prestained Protein Ladder is designed for monitoring protein separated during SDS-polyacrylamide gel electrophoresis, verification of Western transfer efficiency on membranes (PVDF, nylon or nitrocellulose) and for approximate sizing of proteins. The ladder is supplied in gel loading buffer and is ready to use.

Kit Content(s)

Iris9 prestained protein ladder	500µl x 1 vial
---------------------------------	----------------

Storage Buffer

Approximately 0.2~0.4 mg/ml of each protein in buffer (20 mM Trisphosphate pH 7.5 at 25°C), 2% SDS, 0.2 mM Dithiothreitol, 3.6 M Urea, and 15% (v/v) Glycerol.

Required materials but not provided

- Vertical Electrophoresis system
- Power supplies
- Vortex or equivalent
- Microcentrifuge

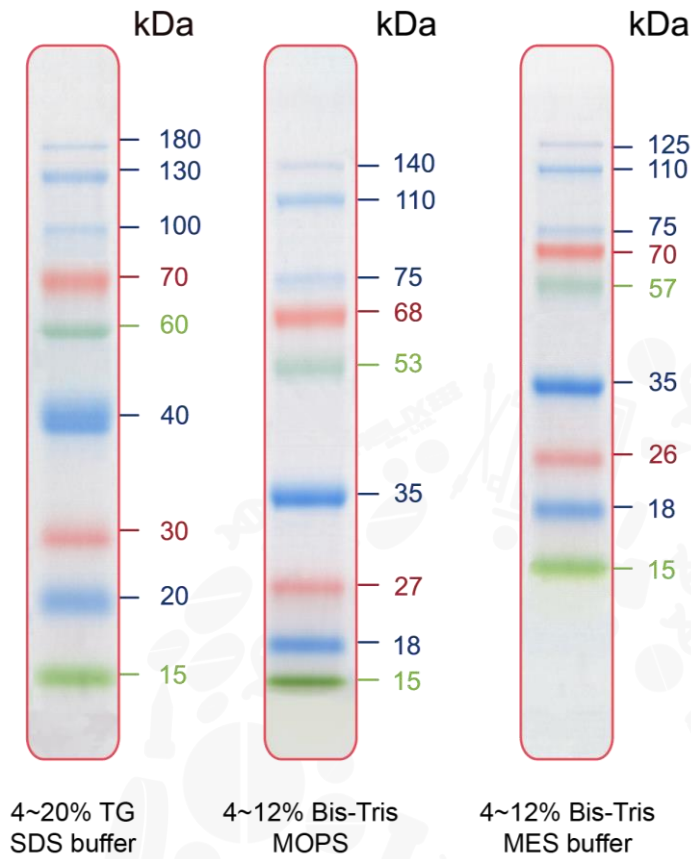
Reaction Setup

3 µl or 5 µl per loading for clear visualization during electrophoresis on 15-well or 10-well mini-gel, respectively. 2.5 µl per well for general Western transferring.



Guide for Molecular Weight Estimation (kDa)

Refer to the Iris9 Prestained Protein Ladder patterns in various electrophoresis conditions:



Important notes

The molecular weight of each protein (kDa) was measured against an unstained protein ladder in every electrophoresis condition. Additional data should be considered for a more accurate adjustment.